

**DOTCO**

45-8043

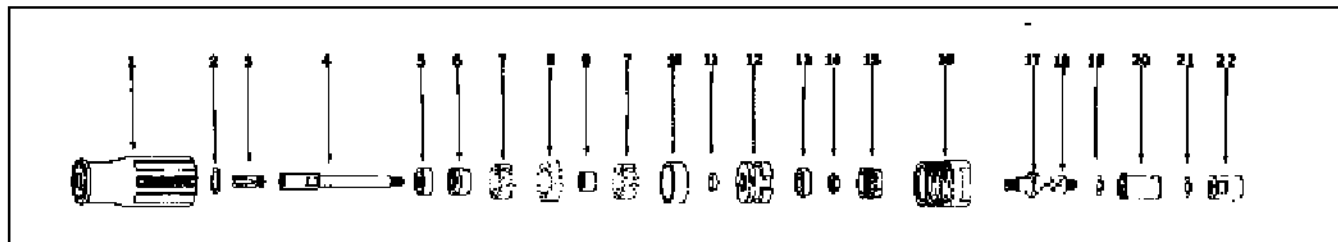
## 10R90.. & 10N90.. Series Light Duty Precision Grinders

R.P.M.	100,000
Roll Throttle	10R9000
No Throttle	10N9000

For additional product information visit our website at <http://www.coopertools.com>

# DOTCO

## 10-9000 Series Light Duty Precision Grinder



Index	Part Number	Description	Qty.
1	1134	Motor Housing	1
2	1140	Spring Washer	1
3	100	1/8" Collet *	1
4	02-2212	Spindle	1
5	502	Front Bearing	1
6	1128	Spacer	1
7	1149	Impeller	2
8	1127	Stator	1
9	1077	Spacer	1
10	1072	Spacer	1
11	1076	Spacer	1
12	02-1119	Bearing Plate	1
13	502	Rear Bearing	1
14	1741	Nut	1
15	1126	Lock Ring	1
16	1834	Adapter (10R9000)	1
	1442	Adapter (10N9000)	1
--	14-0803	Wrench 3/16"	1
--	14-0804	Wrench 1/4"	1
--	45-1307	Inlet Hose	1
--	45-0211	Filter	1
<b>Model 10R9000 only:</b>			
17	1493	Pin	1
18	1470	Valve Stem w/Index 17	1
19	6051	O-Ring	1
20	935	Valve Housing w/Index 19 & 21	1
21	1057	O-Ring	1
22	1807	Adapter	1

\* Note: # 100 - 1/8" collet is standard. Other series 100 collet sizes are listed below.

# 102	3/32" Collet	# 146	1.00mm Collet
# 103	1/16" Collet	# 148	3.00mm Collet
# 131	2.35mm Collet	# 149	4.00mm Collet

### Operation:

This turbine grinder is a precision piece of equipment and the clearances between moving and stationary parts are measured in tenths of thousandths of an inch. An air filter, Dotco # 45-0211, or equivalent, should always be used to keep dirt or rust from entering motor. **CAUTION: DO NOT LUBRICATE THIS TOOL.**

### Service Instructions:

Do not squeeze tool or parts in vise except as noted. To separate the throttle assembly from motor assembly, place motor housing in a vise by gripping lip of housing in soft jaws.

Bearings are sealed and shielded. Do not clean bearing with a solvent and use care to avoid denting either the shield or seal of the bearings during service.